



ARUSH MECHANICAL WORKS



Manufacturer of:

Various types of Storage and Processing Equipments Like,
Tank, Pressure Vessel, Condenser, Basket Strainer, Air Eliminator, Piping Skid,
as well as Processing & Cryogenic Equipment in C.S, S.S, & A.S and Special grades.



BRIEF COMPANY DETAIL

Company Name	Arush Mechanical Works
Address	Plot No. 254, Por Industrial Park, Behind Sahyog Hotel, N.H-8, Dist.: Vadodara – 391243, Gujarat.
Status	Proprietorship Firm
E-Mail ID	info@arushmechanical.com
Website	www.arushequipments.com
PAN No.	BMHPD8428B
Connectivity	Nearest Air Port : Vadodara Airport 40KM (Domestic) Ahmedabad Airport 120KM (International) Nearest Sea Port: Dahej 100KM, Hazira 130KM, Mundra 400KM, Nhava Seva 400KM

2. About Us:

- ▶ Arush Mechanical Works is Engineering oriented unit established in 2020 located on Delhi - Mumbai Industrial Corridor, N.H-48, are manufacturer of wide range of various types of Storage & Processing equipment like Storage Tanks, Heat Exchanger, Condenser, Receiver, Air Eliminator, Reactor, Structure & Piping Skid etc.. which are used in the field of OIL & GAS Sector, Petrochemical Refinery, Pharmaceutical Industry, Food Processing Plant as well Water Treatment / Processing Plant.
- ▶ Arush Mechanical Works is located at , Plot No. 254, Por Industrial Park, Behind Sahyog Hotel, N.H- 8, Dist.: Vadodara – 391243.Gujarat.
- ▶ We design, fabricate & Manufacture job according to customer's requirement / specification / Drawing, parallel to maintaining Quality.
- ▶ We have a team of Engineer & designer with well qualified, experienced & resourceful who are worked with this field with last 5 to 7 years.

3. Vision

- ▶ To become the process plant equipment manufacturer of customer's choice in the global market.

4.Mission

- ▶ To manufacture products that meet and exceed customer requirements and expectations at the most competitive price using efficient business processes there by offering value for money for our customers.

5.Our Philosophy

- ▶ We are committed to enhance customer satisfaction and continually improve as per the context of the organization and support its strategic direction through our Quality Management Systems and performance. We intend to achieve this through the following:
- ▶ Developing products and capabilities competent with the global standards
- ▶ Continuous endeavor for process, system improvement and value additions
- ▶ Provision of adequate resources to meet the set standards.
- ▶ Delivering quality products and service
- ▶ Developing and maintaining motivated staff.
- ▶ Promoting team based work environment
- ▶ Commit to comply all applicable Statutory & Regulatory requirements.

6. Technical Highlights

- ▶ **Technical:** Our concentration to achieve optimum level of quality product with continuous watch by our team of technical expert on Destructive/ Non Destructive testing of our entire products.
- ▶ **Process:** During Process: Non Destructive Testing (NDT)+ Dimensional + Visual with surface test.
- ▶ **Product:** Final Non Destructive Testing(NDT)/Destructive witness by our Q.A./T.P.I./Client. Various testing is performed to maintain superior quality like Magnetic Particle Examination for CS & SS, Liquide Penetration Examination on Bevel end as well as all weld Joint, Radiography examination on Weld Joint specially at T-Joint. All Testing is carryout as per relevant ASME standard.
- ▶ **Extra Care:** Our products are carefully killed/Heat-treated with cycle heating as per the relevant MOC code with induction heating (Electric furnace).

- ▶ **Calibration:** Machineries / Scales / Measuring Instruments / Electro Mechanical Instruments are calibrated periodically.
- ▶ **Traceability:** Traceability is an essence of the product supplied even after significant tenure. Having given a reference of Unique ID No., history of the material/product supplied can be identified

7. Technical Datasheet

Material of Construction	International Code & Standard
Carbon Steel All Grade	ASME Sec. VIII Part-I & II
NACE / H2 & HIC Resistance	DIN
Stainless Steel All Grade	JIS
Cr – Mo Steel	Is2825
Duplex & Super Duplex	TEMA
Monel / Inconel / Hastelloy	Pd5500
Co – Ni & Alloys	EN

8. Products

Storage Tank	Basket Strainer	Pressure Regulating Skid
Pressure Vessel	Air Eliminator	Piping Spool
Condenser	Strainer cum Air Eliminator	Cryogenic Equipment's
Heat Exchanger	Reactor	Structure Skid

QUALITY MANAGEMENT SYSTEM



Certificate of Registration



This is to Certify That The Quality Management System of

ARUSH MECHANICAL WORKS

PLOT NO 254, POR INDUSTRIAL PARK, BEHIND SAHYOG HOTEL, N.H-08,
DIST. VADODARA – 391243, GUJARAT, INDIA.

has been assessed and found to conform to the requirements of

ISO 9001:2015

for the following scope :

MANUFACTURING AND SUPPLIER OF STORAGE, PROCESSING & CRYOGENIC EQUIPMENTS LIKE TANKS, VESSEL, HEAT EXCHANGER, AIR ELIMINATOR, BASKET STRAINER, PIPING SPOOL WITH FLANGES/VALVES ASSEMBLY, STRUCTURE SKID AND VARIOUS TYPES OF FASTENERS MATERIAL LIKE STUD, BOLT, ANCHOR BOLT, U BOLT, NUT, WASHER ETC. IN MILD STEEL, ALLOY STEEL & STAINLESS STEEL.

Certificate No	20DQH83/R1	Issuance Date	: 13/10/2022
Initial Registration Date	: 05/01/2021	2nd Surve. Due	: 05/12/2022
Date of Expiry*	: 04/01/2024		
1st Surve. Due	: 05/12/2021		

ROHS Certification Pvt. Ltd.

ROHS Certification Pvt. Ltd. is a member of BUREAU VERITAS Group. For more information, visit our website at www.rohs-certification.com

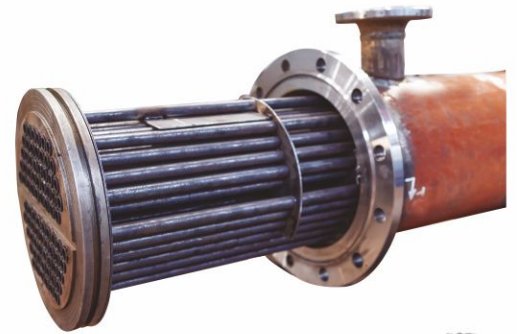




HEAT EXCHANGER

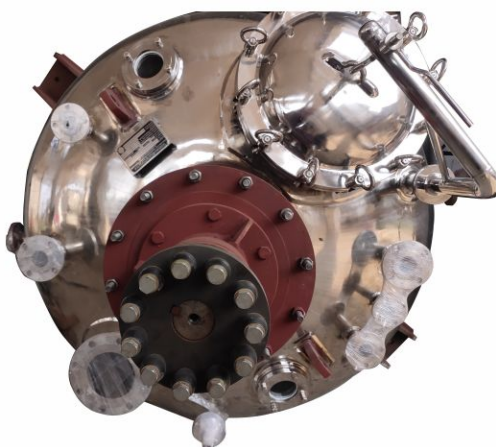
- A heat exchanger is a device built for efficient heat transfer from one medium to another, whether the media are separated by a solid wall so that they never mix, or the media are in direct contact.
- They are commonly used on systems with gas-liquid or vapor-liquid heat exchange, wherein the gas or vapor is the process fluid. The liquid is contained in a tube and the gas flows outside those tubes
- Type Available: Shell & Tube, Kettle Type, U Tube, Fixed Tube Sheet
- MOC: CS / SS / Brass / Nickle
- Orientation: Horizontal / Vertical
- Pressure: Up to 20kg/cm²
- Maximum Temp. Handled: 250Deg. Centigrade
- Standard Followed: TEMA Class C & R, ASME, A D Mark, BS5500 and so on
- Output can be regulated up to 95%
- Removable Tube bundle is easy to clean tube from inside & Outside
- 100% Tubes are passed through Hydro Test as per relevant standard.

- MOC: IS2062 / SA516 Gr.70 / SS304L /SS316L
- High durability & Reliability, Less Maintenance
- Corrosion proof & temperature fluctuation safe to use.
- Made up from advanced material grade as per customer requirement.



REACTOR

- ▶ Chemical reactor design must consider the process reaction kinetics, as well as mass transfer, mixing, heat transfer for addition or removal of heat of reaction, and special considerations for catalysis or biological reactions.
- ▶ Process reactors are used for commercial production applications in the range of 1,000 to 1,000,000 liters. They are sometimes called industrial scale reactors. Process reactors are categorized as batch, continuous, or fed-batch, depending upon the way in which they process samples, products, and waste.
- ▶ Chemical reactors have always been considered as the heart of chemical processes. Improved reactor design and operation will usually translate into significant cost savings and revenue potentials for the chemical plants.



- ▶ MOC: IS2062 / SA516 Gr.70 / SS304L /SS316L
- ▶ High durability & Reliability, Less Maintenance
- ▶ Corrosion proof & temperature fluctuation safe to use.
- ▶ Capacity : 0.5KL to 25KL
- ▶ Type : Limpet / Jacketed
- ▶ Agitator : Paddle, Spiral, Anchor, Propeller, Ribbon type
- ▶ Speed : 15 to 100 RPM
- ▶ Pressure Capacity : Up to 15 Kg./cm².
- ▶ Shaft Sealing: Gland / Mechanical Seal
- ▶ Made up from advanced material grade as per customer requirement.



PRESSURE VESSEL



A pressure vessel is a closed container that is supposed to be leak-proof and is often cylindrical or spherical. Its purpose is to keep fluids (such as gases or liquids) at a pressure that is significantly different (higher or lower) than the pressure of the surrounding environment

- 1) Size: Dia.0.5 Mtr. To to 2.5 Mtr.
- 2) Length: 1 Mtr. To 12 Mtr.
- 3) Pressure Capacity: 1 Bar to 100Bar
- 4) MOC: Carbon Steel / LTCS / SS304 / SS316 / Duplex / Super Duplex Steel
- 5) Orientation: Horizontal / Vertical / Sphere / Elliptical
- 6) Surface Condition: Coated / Rubber Lined
- 7) Design Standard: ASME / IS / API / BIS



STORAGE TANK:

A storage tank is a large vessel for storing oil, gas, and other petrochemical products for short or long term of time. It's majority use to store Chemical, Toxic Material, Gas, Oil, Hazardous Material as well as bulk material which has property to store at atmospheric pressure and temperature.

- MOC: IS2062 / SA516 Gr.70 / SS304L /SS316L.
Orientation: Horizontal / Vertical / Sphere / Elliptical etc..
Size: Dia.4Mtr. x 6Mtr. Long x 25mm Thk.
Storage Cap. Up to 35000KL.
Standard Followed: ASME Sec-VIII, ASTM, Indian Standard
Application: Oil & Gas, Petroleum, Pharma, Chemical, Automobile, Food Processing Etc.



VAPOUR / AIR SEPERATOR

Air Separator consists of a steel cylindrical tank supported on a stand. It has a large cross-sectional area, so that slows down the flow of liquid. Internal Disc or Plate arrangement assists any entrained air or gas to coalesce and separate to the top of the tank, where a high venting capacity air eliminator is fitted.

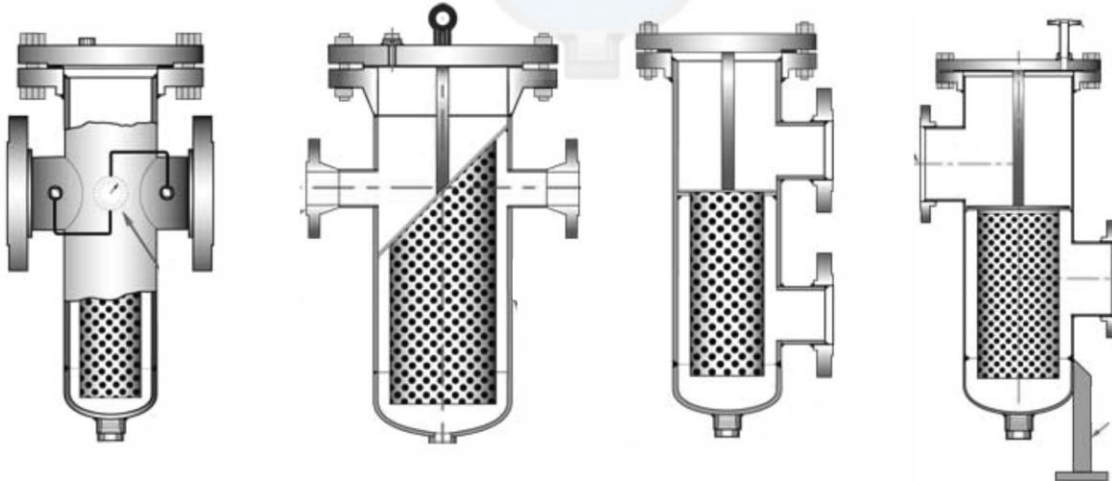


The air eliminator consists of a steel float linked with a pilot valve via multiple linkages. When air collects in the air eliminator, the buoyant force acting on the float reduces, the float drops down along with the pilot valve connected to the linkage and the air escapes through the main valve. As liquid rises in the air eliminator, the float rises to lift the pilot valve, thereby closing the air release opening of main valve.

Size:	0.5" to 24"
Pressure Class:	CL150 to CL900
MOC:	Carbon Steel / LTCS / SS304 / SS316
Flow Rate:	50LPM to 5000LM
Mesh / Micron:	10 to 100 Mesh
Filtration Area :	04 to 05 Times depends on Application
Design Std.:	ASME BPVC Section VIII Div.1
Baffle:	Flat / Circular / Conical
Float Assembly:	Consist of SS304, Aluminium, Brass.



BASKET STRAINER & STRAINER CUM VAPOUR SEPERATOR



- Strainers are often employed in pipelines to protect downstream equipment, such as heat exchangers, pumps, compressors, flow meters, spray nozzles, turbines, and steam traps, from the detrimental effects of sediment, rust, pipe scale, and other extraneous debris.
- Strainers are important components of piping systems to protect equipment from potential damage due to dirt and other particles that may be carried by the process fluid.
- Mesh size for strainers is usually denominated in mm or microns however it can also be assigned a mesh number (which is number of holes per inch)
- A micron is one millionth of a meter. There are some basic references of size of mesh but vary according to such things as heat, pressure and the nature of the material.
- It represents the fineness or coarseness of the screen and indirectly indicates the particle size that can pass through the openings. The higher the mesh number, the finer the screen and the smaller the particles it can retain. A filter with a mesh size of 200 has 200 openings per linear inch.



PIPING SPOOL / STRUCTURE SKID

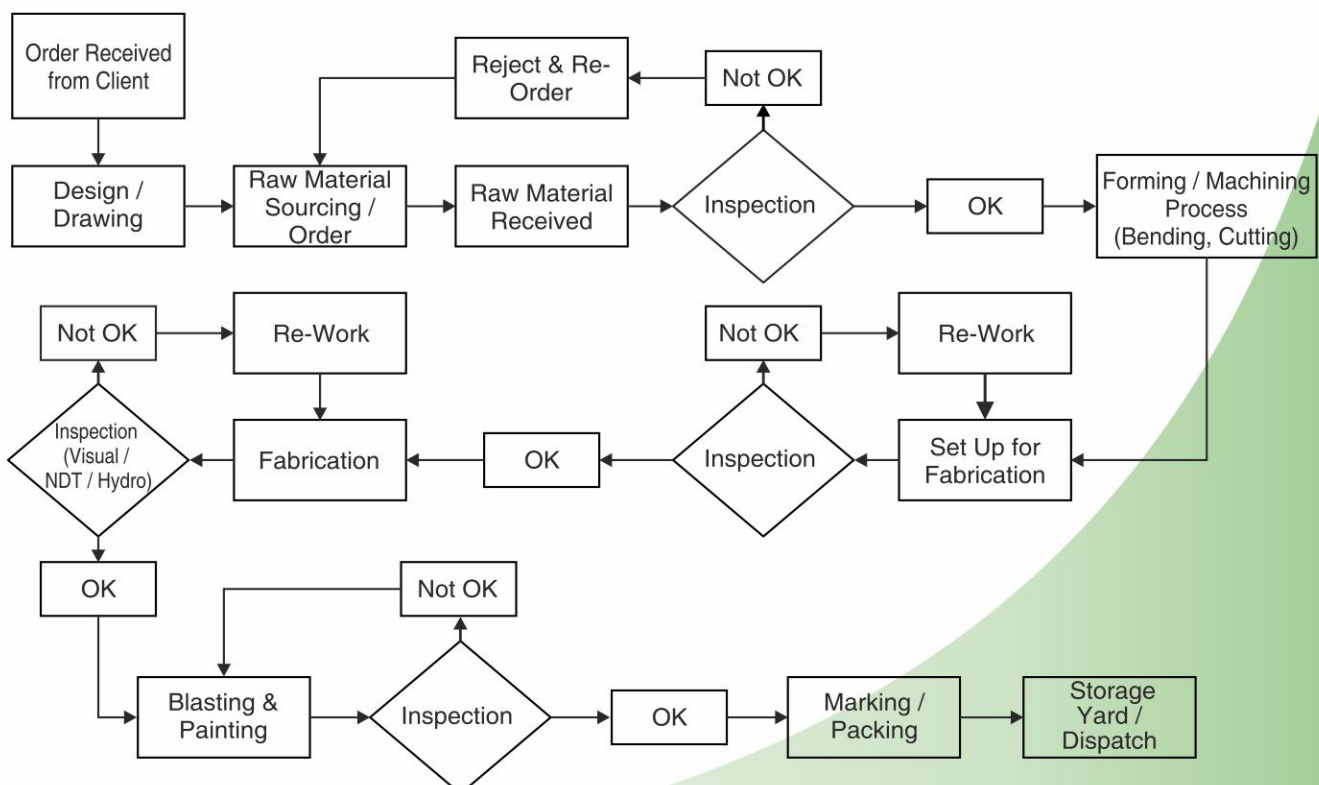
- MOC in CS : A106 Gr. B / A234 WPB / A105 / LTCS / Is2062 / A516 Gr.70 etc.
- MOC In SS : SS304L / SS316L / SS321 etc.
- Pipe, Fittings, Flanges & Fasteners (B36.10/B16.9. B16.5, B18.2)
- All weld joint must undergo through NDT examination Like LPT / UT / MPT / RT wherever required
- Piping standard ASME 31.10 or as per Client's requirement.
- Pressure Cap.: Up to 150kg/cm2.

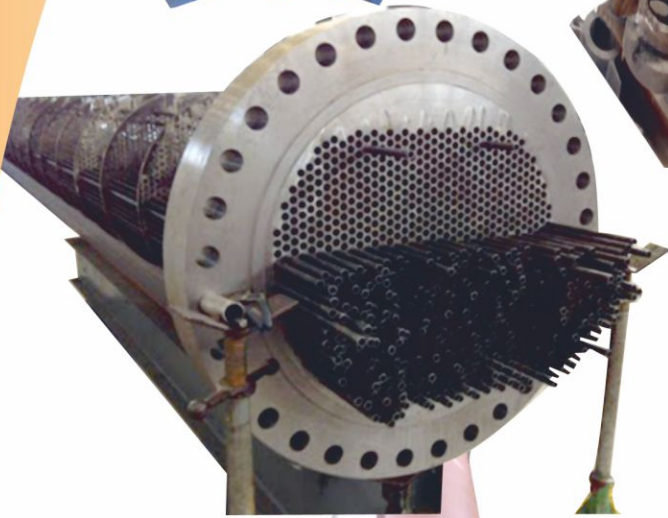


Item	Dim. Std.	Applicable MOC
Pipe	ANSI B36.10	A106 / API 5L / A312
Fittings	ASME B16.9 / ASME B16.11 / MSS SP75 /97/95	A234 WPB / A420 / A403 / A182 / A350 / A105 etc.
Flanges	ASME B16.5 / MSS SP44 / ASME B16.47	A105 / A182 / A350 / A266 etc..
Bolts	ASME A18.2 / IS1363 / DIN	A193 / A194 / B7 / B8 / Gr.8.8 / 10.9 /
Gaskets	ASME / IS	Nitrile / Neoprene / Viton / PTFE / Spiral Wound



MANUFACTURING PROCESS FLOW CHART





CLIENT



ARUSH MECHANICAL WORKS

Plot No. 254, Por Industrial Park, Behind Sahyog Hotel,
N. H- 8, Dist.: Vadodara – 391243. Gujarat.

E:Mail ID : info@arushmechanical.com
arushequipments@gmail.com

Tel. No.: +91-265 - 2991452

Mo. No.: 9909 33 44 89 | 7600 877 044

www.arushmechanical.com



An ISO 9001:2015



Scan to visit Website